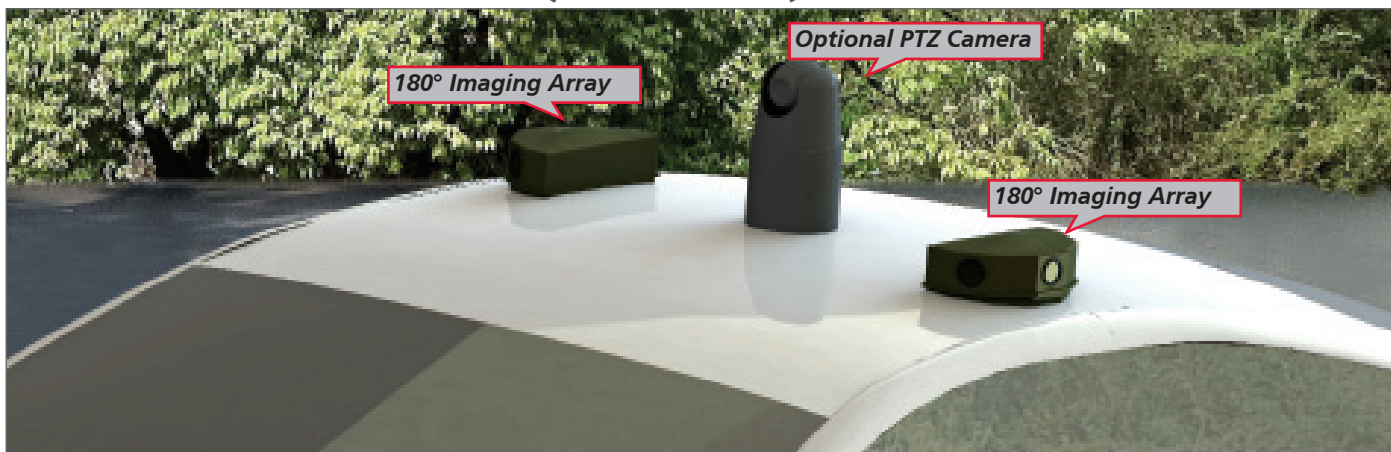


# Light Vehicle Omni-Directional Reconnaissance (LV-ODR)



## FEATURES

- 360° Panoramic View
- HD Video Capture with Advanced PTZ Camera
- Advanced Video Analytics for Unattended Operation
- Simultaneous Recording of Display and Feeds
- Highly Portable and Ideal Solution for Urban Use

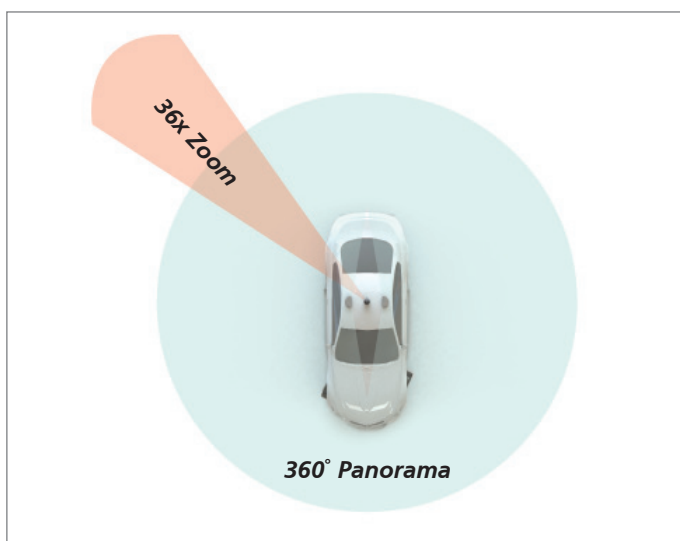
## LIGHT VEHICLE OMNI-DIRECTIONAL RECONNAISSANCE SYSTEM

**LV ODR is a vehicle mounted continuous panoramic video surveillance system. The system consists of two 180° viewing arrays and one high zoom PTZ camera for detailed views of any specific location out of the panorama.**

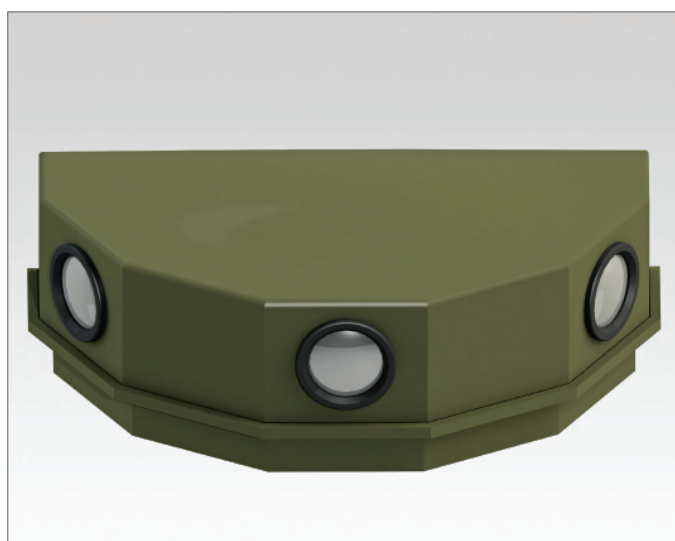
With high end digital image processing and sophisticated algorithms, the images captured from all the cameras are merged to generate a single video feed with specific orientation markings to cue the PTZ camera in any specific direction.

## SYSTEM INCLUDES

- 2 Imaging Arrays
- PTZ camera
- Video Display Unit
- Image Processor and DVR



**360° Continuous Panoramic Security & Surveillance**



**Imaging Array**